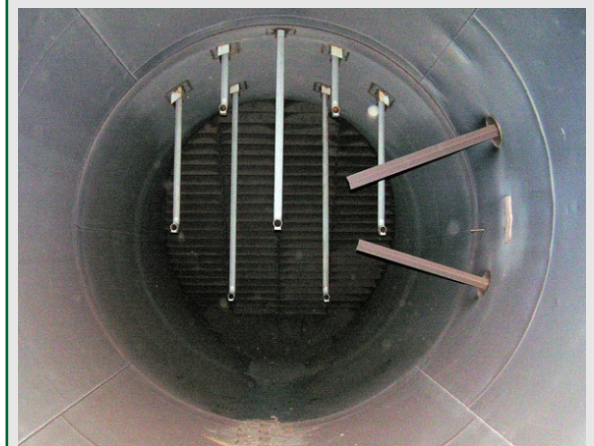


ESCHSORB - Cleaning of exhaust gases

Adsorption of dioxins and mercury



Injection platform on the exhaust duct

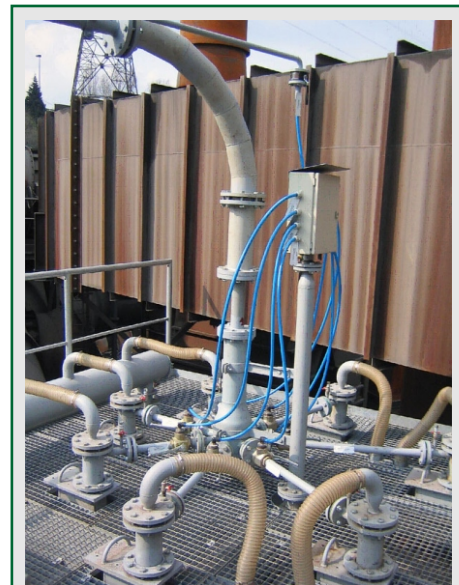


Lances for injection into the exhaust duct

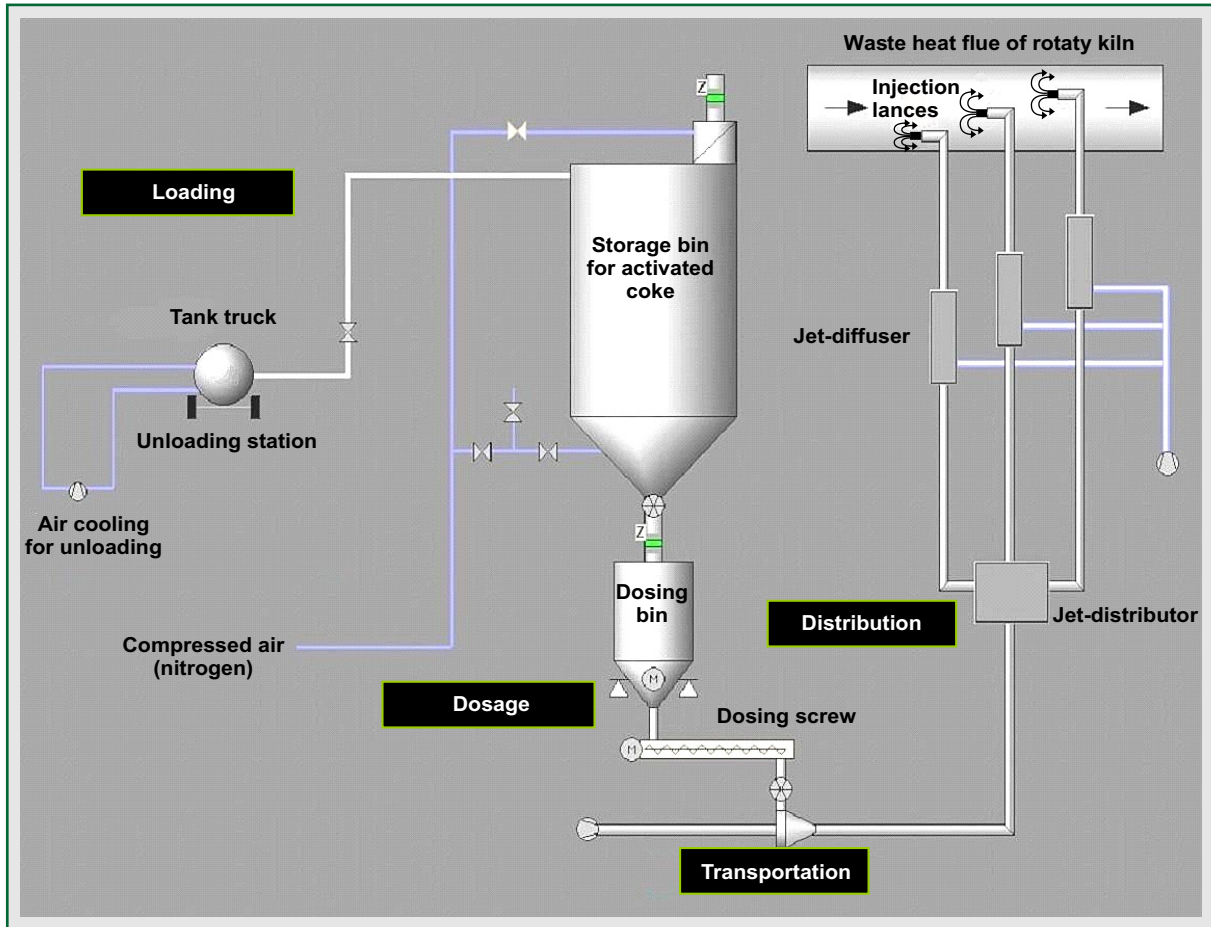
Entrained reactor with equally distributed injection of additives such as activated coke and/or lime into the exhaust lines of sinter plants, electric arc furnaces, rotary kilns for the cement production, incineration plants and power plants for the adsorption of dioxins and/or mercury.



Dosing bin with dosing screw



Jet-Distributor



Installation for injection of activated coke into waste heat flues of cement mills for the adsorption of dioxins and mercury.



Storage bins



Filter on the storage bin

Conveying Technology:

- Injector feeding with static distributor
- Dosing by a metering screw according to weight loss of the dosing bin
- Mass flow rate 2 - 1 000 kg/h



Dosing bin